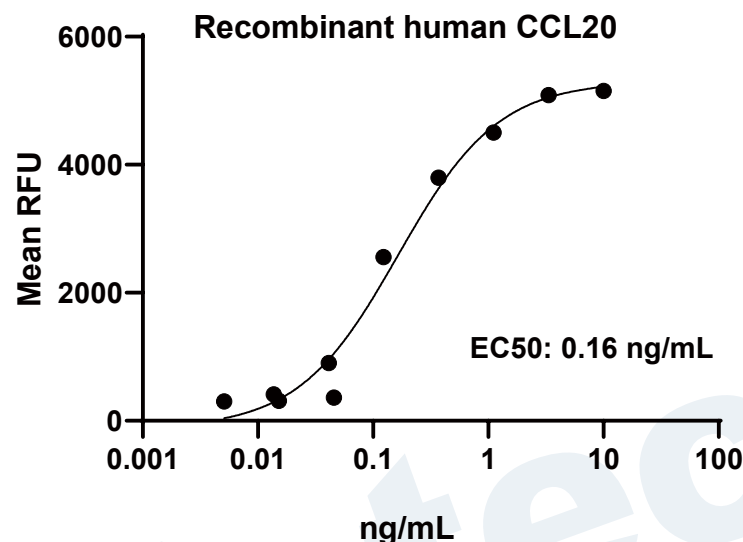
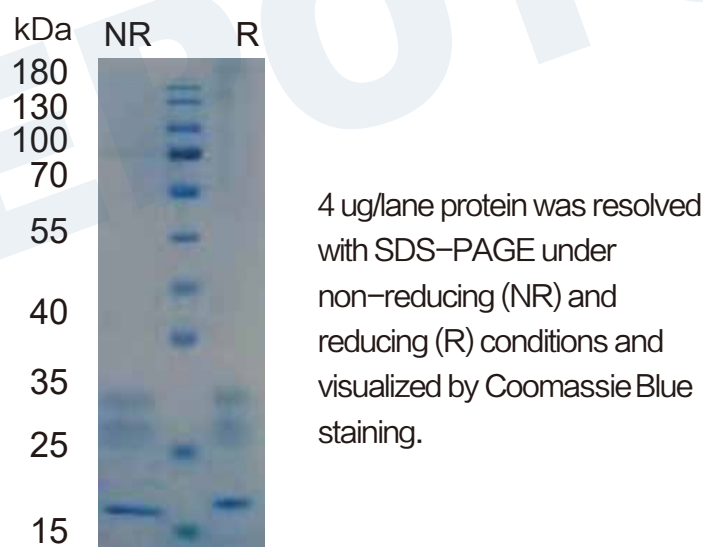


General Information	
Synonyms	CCL20; chemokine (C-C motif) ligand 20; CKb4; LARCLiver and activation-regulated chemokine;
Accession #	P78556
Source	Human embryonic kidney cell, HEK293-derived human CCL20/MIP-3A protein
	Ala27-Met96
Predicted Molecular weight	8.0 kDa
Components and Storage	
Formulation	Solution protein.
	Dissolved in sterile PBS buffer .
	This solution can be diluted into other aqueous buffers. Centrifuge the vial prior to opening.
Storage and Stability	Avoid repeated freeze-thaw cycles.
	It is recommended that the protein be aliquoted for optimal storage.
	12 months from date of receipt, -20 to -70 °C as supplied.
Shipping	Shipping with dry ice.
Quality	
Purity	> 95%, determined by SDS-PAGE
Endotoxin Level	<0.010 EU per 1 ug of the protein by the LAL method
Activity	Measured by its ability to chemoattract BaF3 mouse pro-B cells transfected with human CCR6.
	The EC50 for this effect is 0.01-1 ng/mL.
SDS-PAGE	
Bioactivity	



Recombinant human CCL20/MIP-3A (Catalog # HF-2049) stimulates cell proliferation of the BaF3 mouse pro-B cells transfected with human CCR2A.

Background
<p>CCL20, also known as LARC (Liver and Activation-regulated Chemokine) and as Exodus, is one of many novel beta chemokines identified through bioinformatics. CCL20 cDNA encodes a 96 amino acid (aa) residue precursor protein with a 26 aa residue signal peptide that is predicted to be cleaved to form the 70 aa residue mature secreted protein. CCL20 is distantly related to other beta chemokines (20-28% aa sequence identity) and the gene for CCL20 has been mapped to chromosome 2 rather than 17. CCL20 has been shown to be expressed predominantly in lymph nodes, appendix, PBL, fetal liver, fetal lung and several cell lines. The expression of CCL20 is strongly up-regulated by inflammatory signals and down-regulated by the anti-inflammatory cytokine IL-10. Synthetic or recombinant CCL20 has been shown to be chemotactic for lymphocytes and to inhibit proliferation of myeloid progenitors in colony formation assays. CCL20 has now been shown to be a unique functional ligand for CCR-6 (previously referred to as GPR-CY4, CKR-L3, or STRL22 orphan receptor), a chemokine receptor that is selectively and highly expressed in human dendritic cells derived from CD34+ cord blood precursors.</p>
Reference
<p>1. Baba, M. et al. (1997) J. Biol. Chem. 272:14893.</p> <p>2. Hromas, R. et al. (1997) Blood 89:3315.</p> <p>3. Greaves, D.R. et al. (1997) J. Exp. Med. 186:837.</p>