

General Information

Synonyms	Leukocyte cell-derived chemotaxin-2, Lect-2, Chondromodulin II
Accession #	O88803
Source	Human embryonic kidney cell, HEK293-derived mouse Lect2 protein
	Gly19-Leu151
Predicted Molecular weight	16 kDa

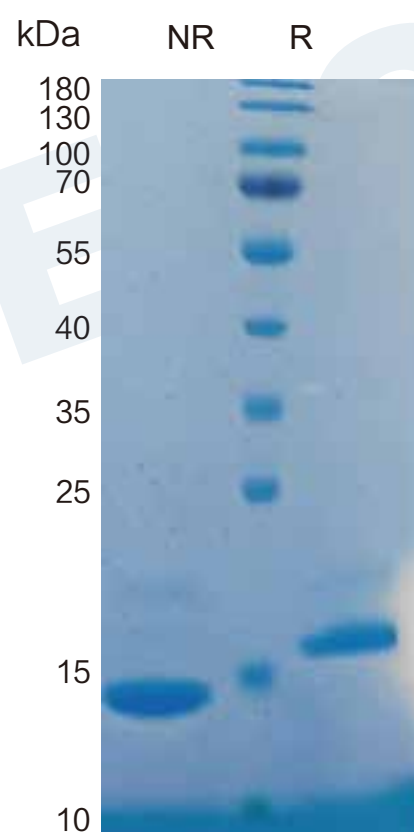
Components and Storage

Formulation	Solution protein. Dissolved in sterile PBS buffer to a concentration of 0.2 mg/mL. This solution can be diluted into other aqueous buffers. Centrifuge the vial prior to opening.
Storage and Stability	Avoid repeated freeze-thaw cycles. It is recommended that the protein be aliquoted for optimal storage. 12 months from date of receipt, -20 to -70 °C as supplied.
Shipping	Shipping with dry ice.

Quality

Purity	> 95%, determined by SDS-PAGE
Endotoxin Level	<0.010 EU per 1 ug of the protein by the LAL method

SDS-PAGE



4 ug/lane protein was resolved with SDS-PAGE under non-reducing (NR) and reducing (R) conditions and visualized by Coomassie Blue staining.

Background

Leukocyte cell-derived chemotaxin-2 (Lect2) is highly expressed in liver and weakly in testis. Not expressed in heart, brain, spleen, lung, skeletal muscle and kidney.

Lect2 has a neutrophil chemotactic activity. Also a positive regulator of chondrocyte proliferation.

Lect2 belongs to the LECT2/MIM-1 family.

Contact us



Global www.epotobiotech.com service@epotobiotech.com

China No.10 Xinghuo Road, Pukou District, Nanjing China

TEL:+86 18652072210